

Florida/Caribbean ARCHITECT

Official Journal of the Florida Association of the American Institute of Architects | Spring 2021

PROJECTS

Igor Reyes, Assoc. AIA, is a partner and president at Nichols Brosch Wurst Wolfe and Associates (NBWW), where he has worked since 1998. He is a graduate of Florida A&M University and is responsible for projects such as 1450 Brickell and the International Finance Bank. Reyes has extensive experience in Latin America, working on projects in Colombia, Costa Rica, El Salvador and Peru. He is concentrated on furthering the development of the design culture at NBWW and its historic contributions to local construction. [Grove XXIII, page 10.](#)



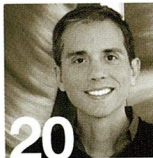
Don F. Wolfe, AIA, is vice president and partner at NBWW. He is a graduate of the University of Notre Dame and, since 1985, has been involved in the design and management of commercial, mixed-use, domestic, and international resort and hotel projects. His experience extends to entertainment, retail, theme park and attraction design. Wolfe has worked on projects in Europe, Central America, Asia and the Caribbean. [Grove XXIII, page 10.](#)



Hamed Rodriguez, AIA, LEED AP, owns Hamed Rodriguez Architect Inc. He is a graduate of the University of Florida and a former winner of the AIA Henry Adams Medal. Rodriguez has more than 20 years of experience with Perkins&Will and STH, a LEO A DALY company. He designed the first LEED Gold building in Miami-Dade County. Rodriguez takes the concept into a technically excellent reality through an understanding of design, land planning, sustainability, energy cost reduction, building codes and government regulations. [Hammock Lakes Residence, page 17.](#)



Alejandro Borrero, AIA, a native of Colombia, owns Borrero Architecture. He studied in Bogotá, Colombia, as well as Scotland and Spain, and his work has been recognized with AIA Palm Beach Honor Awards for Design Excellence. Some of his favorite projects, such as the Ruth and Ted Baum Entry Complex at the Palm Beach Zoo, were developed along with artists. His portfolio ranges from custom single-family homes to commercial and institutional design. [Ruth & Ted Baum Entry Complex at the Palm Beach Zoo, page 20.](#)



Jorge Rigau, FAIA, is a graduate of Cornell University and the founding dean of the Polytechnic University of Puerto Rico's School of Architecture. He has taught, practiced, researched and published in the Caribbean, United States and Europe. He is responsible for preservation projects across Puerto Rico, including residences, churches, schools, cemeteries and plazas, and the [San Juan Chapter House, page 23.](#)



Joyce Owens, FAIA, RIBA, is the principal architect at Architecture Joyce Owens | Studio AJO. She is the 2020 recipient of the AIA Florida Medal of Honor for Design for her contributions to the architecture profession, her communities and architecture at large. She is a graduate of Notre Dame and was a co-founding partner of Aman Owens Architects, London, where she worked with Prime Minister Boris Johnson, Alexander McQueen, Isabella Blow and TAGHeuer. Owens has been published in *The New York Times*, *The Sunday Times*, *Architecture Review* (UK), *Interior Design* (U.S.), *Architettura d'Interni*, *Maison Francaise*, and *Elle* magazines and other publications. She is also a past president of AIA Florida. [Sol Mates Cottage, page 26.](#)



FEATURES

Andrea Clark Brown, AIA, owns Andrea Clark Brown Architects, P.A., adjoining UP ART and Design Gallery, where she is curator, director and co-founder with her husband, John Carroll Long. She is a graduate of the University of Virginia and Bryn Mawr College and is a Prix de Rome recipient. She has been a professor at Harvard University, Syracuse University, the University of Virginia and the University of Miami. Much of Brown's work marries contemporary and historical insights, observations and examples of breaking with convention during the design process that transforms the ordinary into the extraordinary. [A Conversation with Andrea Clark Brown, AIA, page 30.](#)





Hammock Lakes Residence

Coral Gables, FL

Hamed Rodriguez Architects Inc. | Coral Gables



Hammock Lakes was originally built in the 1970s, with exposed, salmon-colored concrete block on the exterior and glue-laminated beam ceilings inside, a boldly designed home that was the focal point of its lot.

But when the latest owners wanted to add a perimeter wall that would block the view of the home from the street, Hamed Rodriguez, AIA, decided to take the opportunity to make the renovated home a series of discoveries. His renovation added the wall, a 200-foot-long cantilevered walkway from the home to the pool and guest pavilion, and nearly doubled the size of the house itself from around 5,800 square feet to nearly 10,000 square feet.



"When you move through the house, it's a series of moments," Rodriguez said.

Starting with the front door, which was reimagined to include glass and a cover for the entrance area that opens into the foyer. Then, instead of the ceilings rising, the floor drops. In the foyer, the ceiling height is 8 feet, but then the floors drop until the ceilings are around 12-14 feet in some rooms. This takes advantage of the sectional quality of the entry as you descend into the living area.

"It's one of those elements that's really unexpected," Rodriguez said. "There's a language, too, with the materiality."

New parts of the home are poured concrete while the original structure is now an earthy brown, chosen because repair work to the existing block made it impossible to preserve its color. The brown also blends into the extensive landscaping work on the property, emphasizing the theme of discovery.

Throughout the interior, white tile flooring was removed and replaced with a bespoke terrazzo. Plumbing and wiring were modernized. The tropical modern home, despite its size, has a cozy feel, Rodriguez said.





The new 200-foot cantilevered covered walkway cuts through the foliage and a series of grottos that also help to drain the property. Existing, mature landscape, including a large banyan tree, is enhanced by new, tropical landscaping that frames the walk to the pavilion and a lap pool.

The pool area evokes Miami's local vernacular traditions, with coral stone and oolithic limestone in the walkways, pool deck and on the pavilion's accent walls. The pavilion includes a guest house redesigned with larger windows that frame the exterior views. Behind the pavilion and guest house is the property's last surprise – an expanse of lawn.

"It's really like a small resort," Rodriguez said. ■